

MROQC & METS Database – Level 1 & Level 2 Password Criteria

NoteIf this is your first time logging into the MROQC or METS database, please refer to the [“MROQC & METS Database New User Instructions”](#)**

Changing your Password

When prompted to change your Level 1 (VPN) or Level 2 (MROQC or METS) Password, please verify your “new” password meets ALL of the following criteria:

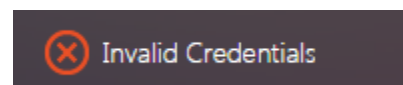
Level 1 and Level 2 Password Criteria:

- Password must be at least 10 characters in length
- Password must have at least one uppercase letter
- Password must have at least one lowercase letter
- Password must have at least 2 numbers
- Password must have at least 2 special characters
- Password cannot contain your name
- Password must be different than your past 5 passwords

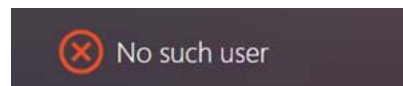
Please refrain from logging in after 3 failed attempts and submit a support ticket via email to: support@mroqc.org

Troubleshooting Error Messages

If you receive the following error message(s):



The new password you selected does not meet the required password criteria. Please review the above criteria and try again.



Please verify you have entered your username correctly.
If your username has been entered correctly, please contact support.